

NEW FOREST NATIONAL PARK AUTHORITY PLANNING COMMITTEE – 18 NOVEMBER 2025

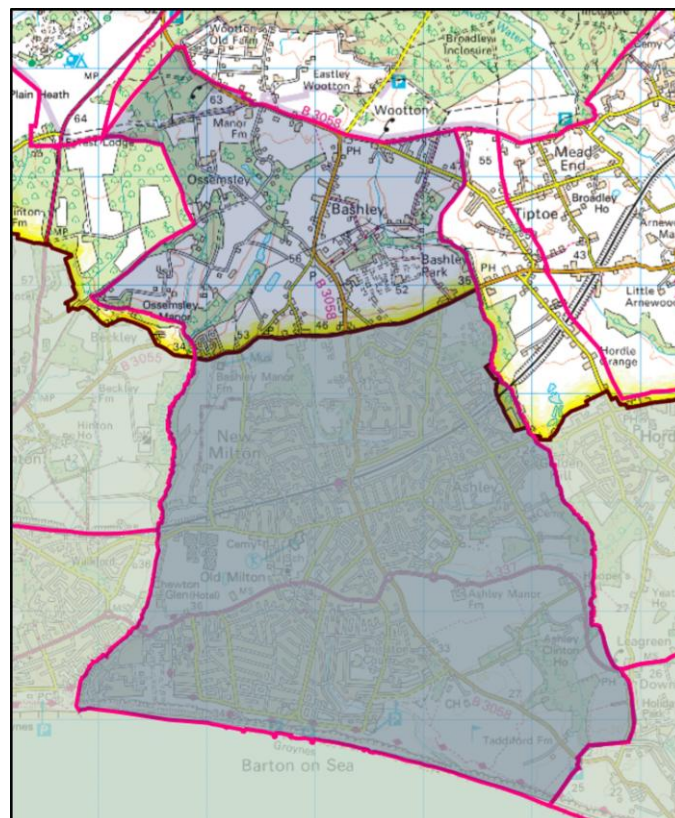
PC501/25

NEW MILTON NEIGHBOURHOOD PLAN – CONSULTATION

Report by: Jade Bowes, Policy Officer

1 Introduction

- 1.1 The New Milton Neighbourhood Area was formally designated by the New Forest National Park Authority in February 2015. This designation related to the area of the parish within the New Forest National Park for planning purposes. New Forest District Council similarly confirmed the designation of the areas of the parish which lie within their planning jurisdiction in February 2015.
- 1.2 The map below illustrates the boundary of the parish of New Milton (highlighted in blue) - the northern area is within the National Park (e.g. Bashley, Ossemsley); and the larger area to the south within New Forest District Council's planning area.



- 1.3 The existing New Milton Neighbourhood Plan was adopted in June 2021 following a successful referendum in May 2021. In response to updates to the planning system since the previous Plan was made, the Town Council has sought to update their Neighbourhood Plan. This is with the intention of reviewing the effectiveness of current policy, considering the introduction of new policies, and seeking

opportunities for development on brownfield land, so as to reduce the need for Green Belt release following significant increase in housing targets.

- 1.4 A Steering Group made up of local residents and representatives of New Milton Town Council has overseen the work on preparing the Neighbourhood Plan, including the liaison with officers from the National Park Authority and New Forest District Council. The Town Council has also appointed a planning consultant (O'Neill Homer) to support the production of the Neighbourhood Plan.

3. Submission draft Neighbourhood Plan (Regulation 16)

- 3.1 In October 2025 New Milton Town Council submitted their Regulation 16 'Submission draft' Neighbourhood Plan to the Authority and New Forest District Council. Alongside the draft Plan the following information was also submitted:

- New Milton Design Guidance and Codes (Final Report, May 2025);
- Brownfield Sites;
- New Milton Town Centre Site Masterplanning Studies (Final Report, May 2025);
- Habitat Regulations Assessment (September 2025);
- Strategic Environmental Assessment (SEA) (May 2025);
- Station Road Area of Special Character Study (December 2024);
- Submission Modification Proposal (September 2025) – setting out the proposed material modifications made to the Plan;
- Modification Proposal Statement (September 2025);
- Basic Conditions Statement – setting out the Town Council's position on how the modified Plan meets the 'basic conditions' that it will be examined against; and
- Consultation Statement – setting out the consultation undertaken over several years during the preparation of the Plan.

- 3.2 Under Regulation 16 of the [Neighbourhood Planning \(General\) Regulations 2012](#), the National Park Authority and New Forest District Council are required to consult a range of stakeholders on the Submission draft Neighbourhood Plan for a period of at least 6 weeks. The intention is that the National Park Authority and New Forest District Council will hold a joint consultation, commencing in late November 2025 for 8 weeks to account for the holiday period in December.

- 3.3 The modified New Milton Neighbourhood Plan is set out in Annex 1. It comprises of 24 policies in total, including 6 new proposed policies (covering Biodiversity, Energy Efficiency, Conservation, Local Shops, Brownfield Sites, and an Area of Special Character). 9 policies have been retained from the current adopted plan, and 9 have been modified through this review process. At this stage the Authority is required to check that the necessary procedures have been followed and the required information submitted, before arranging the final consultation on the draft Neighbourhood Plan. It is through this consultation that representations will be made, before the Plan and its supporting evidence base is subject to independent examination and ultimately a local referendum.

- 3.4 Officers have reviewed the information submitted with the draft New Milton Neighbourhood Plan – as summarised in paragraph 3.1 of this report – and have concluded that the statutory requirements have been met. It is therefore recommended that the Submission draft New Milton Neighbourhood Plan (Annex 1) proceeds to the final stage of public consultation under Regulation 16 of the Neighbourhood Plan (General) Regulations 2012 (as amended). This consultation will be jointly co-ordinated by the National Park Authority and New Forest District Council.

Recommendation:

Members of the Planning Committee endorse the Submission draft New Milton Neighbourhood Plan in Annex 1 to this report for the purposes of the final public consultation under Regulation 16 of the Neighbourhood Planning (General) Regulations 2012 (as amended).

Papers:

PC 501/25 – Cover report

Annex 1 – Submission draft New Milton Neighbourhood Plan

Equality and Diversity Implications:

There are no specific equality or diversity implications arising out of this report. A wide range of statutory and other consultees will be consulted on the Submission draft Neighbourhood Plan.

Contact:

Jade Bowes

Policy Officer

Tel: 01590 646658

Email: jade.bowes@newforestnpa.gov.uk