

These are key features in the conservation area and the points relate to the numbered areas on the map:

Beaulieu typifies the traditional English village set in a rolling landscape with the Abbey, river and mill pond with its mill. It has everything and it is this completeness which makes it so important.

- 1 The Abbey Church is unusual in having the altar at the south end because it was originally the monk's refectory. The unique pulpit is built with its staircase in the thickness of the wall. The church hall (1992) was traditionally built using English oak and stone from the abbey ruins.



View out from rear of High Street

- 2 Palace House was converted from the Great Gatehouse into a dwelling in 1539 following the dissolution of the Abbey. The moat and turrets were constructed as protection from the French in the 18th century and major works were carried out in the 1870s.

- 3 The view from the rear of the High Street to the farmland beyond. The new housing respects this relationship and improves the setting of the car park.

- 4 When is a phone box not a phone box? When it's a listed building! The listed telephone kiosk on the east side of the High Street is one of the K6 type designed by Sir Giles Gilbert Scott in 1935.

- 5 One of the many significant views of Beaulieu is on the approach from Hatchet Pond - an irregular collection of orangey-red clay tile roofs, dormers and chimney stacks which has hardly changed in centuries, interspersed with substantial evergreen trees.

- 6 The mill pond and the tidal river form part of a National Nature Reserve and a Site of Special Scientific Interest (SSSI). It is important to protect their uncluttered natural profiles from erosion by the large numbers of tourists who come to enjoy this peaceful spot.



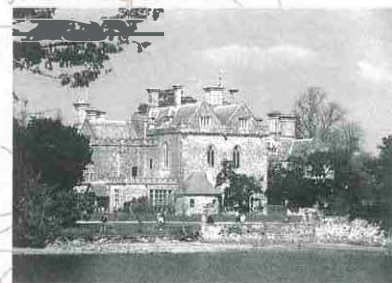
Abbey Gate Cottages



Details are important



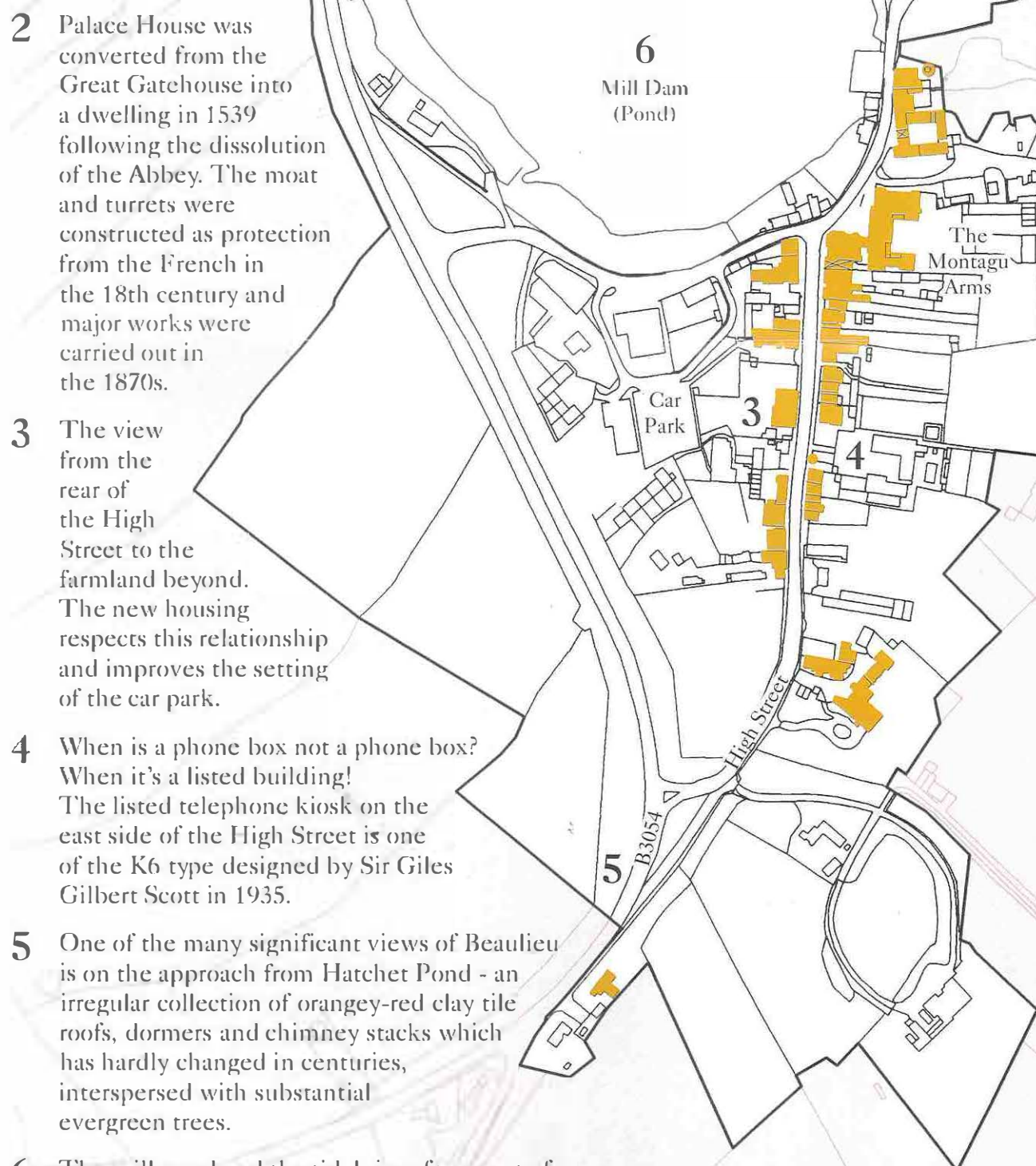
Church Hall



Palace House



High Street



These are some of the things that make Beaulieu special - they need to be looked after:

History

- The linear structure of the village.

Buildings

- Small one and two storey buildings of modest span and low eaves.
- Red stock brick and yellow/buff Beaulieu brick with red clay tiled roofs.
- Detailing - prominent chimney stacks, tiled dormers, casement windows, patterned roof tiling.

Archaeology

- The Abbey and associated structures both standing and buried.

Landscape/Townscape

- The feeling of a compact settlement set in an agricultural landscape.
- Mill Dam Pond
- The traditional rural picket fencing mixed with brick walls and iron railings forming front boundaries to domestic properties.

Setting

- View down to the village from Hatchet Lane.
- Views across Mill Dam Pond and the Beaulieu River.
- View out of the village from the rear of the High Street across the high fields.

Potential for enhancement

- The Mill and its surroundings.
- The approach to and area around the former electric light station and the Fire Station.
- The main car park and the public toilets.

Key to Map

- Listed Building
- ✚ Scheduled Ancient Monument
- Site of Special Scientific Interest

0 100 200

Scale in Metres



High Street roofscape